



**open+**<sup>™</sup>  
by bibliotheca



### Complement existing staff hours

Designed to complement your core staffed hours, open+ utilises technology to keep libraries open at any hour of the day, from early mornings to late evenings.



### Grow library usage and circulation

Convenience is important to today's users. When access to the library fits within their busy schedules, people are more likely to take advantage of your service and increase your circulation.



### Ensure community relevance

With many options and places to spend their time, ensure that your users consider your library to be one of the best places to access information and enjoy safe surroundings.

"Staff now have more time to dedicate to more user-focused tasks during staffed hours, and user satisfaction levels, loans and visitor rates have increased."

Mary Stuart, County Librarian  
Offaly County Library, Ireland

a solution you can trust to provide library access when it suits your users

open+ is a comprehensive system that provides access to your library service during non-standard times. Full control of your library can be achieved remotely without the need for staff to be present. System components are modified and tailored to suit your individual library, regardless of size or location.

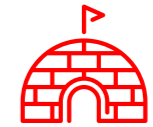




**big, medium + small**  
open+ works in branches  
of all shapes and sizes

**2004**  
**concept began**  
ten+ years ago

**OVER 500** LIBRARIES  
operate with open+ hours



**provides access  
in the North Pole**

Svalbard Library, the most Northern  
Library in Norway



## experience that ensures your success

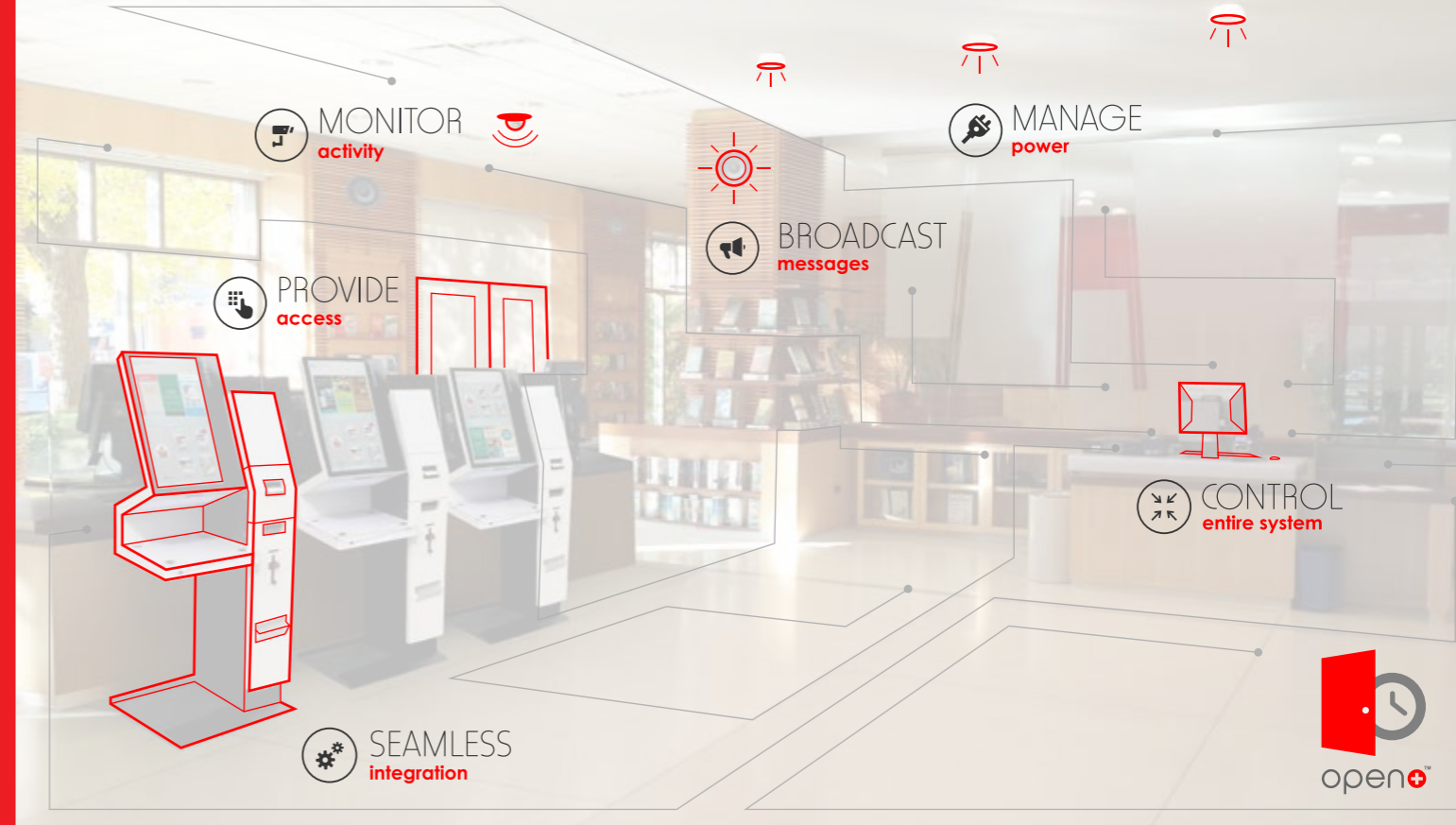
open+ is a concept that started in Scandinavia in 2004 by libraries who wanted to be “more open”. The open+ system has been designed and developed with the specific needs of libraries in mind.

Utilising our reliable technology solution, open+ enables library users to conveniently access your library service during open+ hours when your trusted staff are not available. Our commitment to provide reliable solutions is ingrained through our entire team of developers, project managers and support professionals.



## more than just components

open+ was designed to pull all aspects of managing your library together into one easy-to-use solution for library staff. Integrating with your existing LMS and self-service technology, open+ delivers the easiest system management experience available.



### provide access

With our clearly labeled external access panel, your library users can easily access the library at times that are most convenient to them. By simply using their current library card and an optional PIN, users are granted access through LMS authentication. Barcode, RFID and Mifare card technologies are supported and the helpful LCD screen can display your open hours and user instructions.



### monitor activity

Provide library users with extra peace of mind while using your library in open+ mode by installing security cameras throughout the building. Event-driven photo and video surveillance allows you to monitor both external and internal library environments and provide security and safety for users during open+ hours. Cameras can be placed at the entrance of your library and throughout the entire space, as required.



### set custom schedules

We've designed a streamlined scheduling interface to manage open+ hours in your library. Using the central administration interface, you can quickly schedule when the library will be staffed, operating in open+ mode or closed. All settings can quickly be altered, extended or removed with a few simple clicks. This open+ schedule automatically triggers the change in building operation based on the time of day and settings you configure. An override switch can be installed to give your staff full control in any situation.



### broadcast messages

Library users stay informed about the status of the library through the use of a PA system. By broadcasting scheduled and event-driven pre-recorded messages and warnings, everyone in the library is alerted when the library is entering or exiting open+ mode.



### manage power

To simplify operations for your library staff, the open+ solution can turn on and safely shutdown the power for all the lights in the library, your building security alarms, public access computers, self-service kiosks and more. Not only is the library fully operational in open+ mode, but you can ensure the energy consumption in your library is efficiently managed without having to remember if you powered everything down before leaving for the day.



### control entire system

By controlling these components from one convenient place, open+ simplifies the management of your entire library system, from providing access to powering up self-service kiosks. Built to be flexible and accommodate current library systems, open+ can also integrate with certain 3rd party devices. The open+ solution records all library event activity and provides statistical reporting for management to review.



“We chose open+ for four reasons. It kept all of our libraries open. It made the savings required from the library service. It future proofed our library service for the next 5-10 years. It really is the best of both worlds, giving users access to our services, when they want it.”

Lisa Roberts, Strategic Client Manager  
Culture and Leisure at Peterborough City Council, United Kingdom

## proven results

Peterborough is one of the fastest growing cities in the UK. The City Council's library network, which is run by the independent trust Vivacity, currently comprises 10 libraries and a mobile service across the city centre and rural areas. Peterborough City Council overcame the challenge of budget cuts and avoided library closures with the implementation of open+.



**PETERBOROUGH**  
one of the fastest growing  
cities in the UK

**250**  
**open+ users**  
**per day**

during peak usage



**50** PERCENT  
⌚ **increase in open hours**

**10+** libraries with open+ installed



## easy to purchase

bibliotheca has been awarded a place on the Crown Commercial Service (CSS) G-Cloud 8 agreement for the supply of open+, and is listed as an accredited supplier of open+ on the ESPO 350 framework. Contact us today or go through your traditional procurement methods.

Crown  
Commercial  
Service  
Supplier

ESPO



## about bibliotheca

We provide tools and services that help libraries anticipate, identify and serve the needs of their users. We aim to help transform libraries into indispensable, equitable community hubs that inspire creativity, collaboration and life-long learning.

We serve libraries on in more than 70 countries around the world and are proud to partner with more than 30,000 unique libraries, helping them evolve their services and connect with their communities.



Read more...

Full product brochures  
quickConnect™ brochure  
cloudLibrary™ brochure



 **bibliotheca**<sup>®</sup>  
transforming libraries

[www.bibliotheca.com/open+](http://www.bibliotheca.com/open+)  
[info-uk@bibliotheca.com](mailto:info-uk@bibliotheca.com)  
[facebook.com/smartlibraries](https://facebook.com/smartlibraries)  
[twitter.com/smartlibraries](https://twitter.com/smartlibraries)  
[linkedin.com/company/bibliotheca](https://linkedin.com/company/bibliotheca)